



**Welcome**  
**Class of 2022**

# Meet Your Counselors

- ❖ Mrs. D'Annunzio 9<sup>th</sup> Grade
- ❖ Mrs. Alessi-Rozzi 10<sup>th</sup> Grade
- ❖ Ms. Lima 11<sup>th</sup> Grade
- ❖ Dr. Urbina (Coordinator) 12<sup>th</sup> Grade
- ❖ Mr. Milhomme ESOL

# Graduation Requirements



- 24 Credits Required
- State Assessments
  - Alg 1 EOC
  - FSA Reading (10<sup>th</sup> grade)
- 2.0 GPA (minimum)
- 20 Hours of Community service (minimum)
- Pass One Online course

# Required Credits for Graduation

❖ English: 4 credits

❖ Math: 4 credits

(Algebra 1, Geometry & Higher)

❖ Science: 3 credits

(Biology, Physical Science & Science Elective)

❖ Social Studies: 3 credits

(World History, US History & Government/Economics)

# Required Credits Cont.

- ❖ Physical Education: 1 credit  
(personal fitness & PE(fitness lifestyle)  
**OR** HOPE (online)
- ❖ Performing Fine Arts: 1 credit  
(2-D Art, Theater, Speech, DIT)
- ❖ Electives: 8 credits
- ❖ Foreign Language: 2 or 3 credits  
(University requirement)

# Grade Point Average

**2.0 GPA**  
**[minimum]**

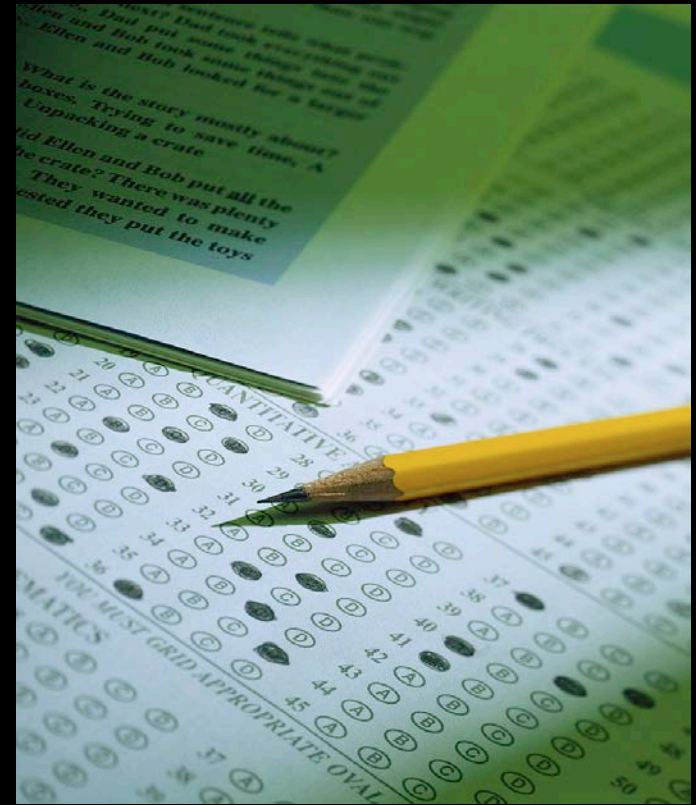
\*Many colleges require 3.5 and  
*higher* for admissions



# TESTING

Must Pass the following:

- ❖ Algebra 1 EOC Exam
- ❖ Grade 10 English FSA Assessment



# Community Service Requirement

- 20 Hours for Graduation
- 100 Hours for Bright Futures
- Green forms available in the guidance office





# Online Class



[www.flvs.net](http://www.flvs.net)

- ❖ **Semester Classes DO count as one:**  
(Ex: Life Management Skills, Peer Counseling, Drivers Education, Parenting Skill, Psychology)
- ❖ **Full year courses DO count as one:**  
(Ex: Leadership Skills Development)

# Grade Calculator

**Quarter 1 = 40%**

**Quarter 2 = 40%**

**Exam = 20%**

Example:

(Q1) C + (Q2) A+ (Exam) B =  
(Semester 1) B

# Where does GPA come from?

## Regular

$$A = 4$$

$$B = 3$$

$$C = 2$$

$$D = 1$$

$$F = 0$$

## Honors

$$A = 4.5$$

$$B = 3.375$$

$$C = 2.25$$

$$D = 1.125$$

$$F = 0$$

## AP/AICE

$$A = 6.0$$

$$B = 4.5$$

$$C = 3.0$$

$$D = 1.5$$

$$F = 0$$

# Does Freshman Year Count?

- Let's say you finish the year with a 1.0 GPA...

# And in 10<sup>th</sup> grade you get a...

- 2.0 GPA... That's only a 1.5 cumulative
- 2.5 GPA... That's a 1.75
- 3.0 GPA... That's a 2.0- the minimum you need for grad.

**So what does that mean?!**

Grades earned freshman year  
**REALLY DO COUNT!**

**FRESHMAN YEAR**

FOCUS ON YOUR FUTURE

# Manage your time

## Create a Study Plan

- Use your Planners!
- How much time do you have each day?
- How much study time do you need to allow?
- Schedule practices, meetings, tutoring etc.
- Use class time when available!

The image shows the cover of a book titled "How to Survive Your Freshman Year". The text is arranged in four lines: "How to" in white on a black background, "Survive" in large red letters, "Your" in white on a green background, and "Freshman Year" in large black letters. A horizontal line separates "Survive" and "Your".

**How to**  
**Survive**  
**Your**  
**Freshman Year**

# Long Term Plan

FloridaShines

1. Use [floridashines.org](http://floridashines.org) to track your courses & look at colleges.
2. Create a resume to include:
  - a. *extracurricular activities*
  - b. *volunteer service*
  - c. *awards and honors*
  - d. *any accomplishment that is distinctive to your personality.*



# Follow us on Social Media

- Remind:  
@Ohguidance to 81010



- Twitter  
@OHHSCounselors



# Thank You For Your Attention



Your School Counselors Are Here  
To Help You Succeed 😊